


BATEK ARCHITEKTEN



YORCK PASSAGE

BATEK ARCHITEKTEN
HEINRICH-ROLLER-STRASSE 20 · 10405 BERLIN · GERMANY
T +49 30 8680 375-0 · F +49 30 8680 375-30
CONTACT@BATEKARCHITEKTEN.COM · BATEKARCHITEKTEN.COM

PRESS RELEASE

March 2022

BATEK ARCHITEKTEN completes renovation of the historic Yorck Kino Passage cinema in Berlin

One of Berlin's oldest cinemas shines again. With their signature sensitivity towards existing spaces, BATEK ARCHITEKTEN have brought new allure to the foyer and two smaller auditoriums of the Passage cinema through a series of precise interventions. This has allowed the historic aura of the hundred-year-old building in Neukölln to unfold in new ways yet simultaneously fulfill the functional and aesthetic requirements for a visit to a contemporary cinema.

The original neoclassical-style 'Rixdorfer Gesellschaftshaus' (Rixdorf Society House) building was erected in 1908. Two years later, the 'Excelsior Lichtspielhaus' cinema opened on the first floor in a space originally intended to be a theatre auditorium. After its closure in 1968, the cinema was used as a furniture storage space, amongst other things. At the end of the 1980s, the Yorck Kinogruppe (Yorck Cinema Group) took over the building, which was now under a preservation order. They restored the large main auditorium to its former historical glory and called it the 'Passage Kino'.

BATEK ARCHITEKTEN also designed the interiors of the Kino Delphi Lux cinema for the same client. But whereas with the Delphi Lux the architects had a newly-built space to play with, the task with the Passage cinema – as with the Blauer Stern, another old Berlin repertory cinema they restored and updated – was to let the beauty of the existing space shine once again whilst adapting it to the requirements of a contemporary cinema audience.

The aesthetic of the building complex is defined by the shape of the large arched windows of the façade. BATEK ARCHITEKTEN picked up on this dominant repeating form in their design of their new bar for the foyer. The natural tones of the colour scheme follow the earthy reddish-brown colour of the original preserved linoleum flooring in the foyer. This colour palette is complemented with the surprising addition of a pistachio-green coat for the arched foyer bar, balanced by a pale natural cork covering on the other cupboard fixtures to its left, which conceal the drinks storage and staff room spaces. The cork covering allows for the hanging of posters and notices on the large flat doors.

In a resource-conservative approach, part of the original Corten steel cladding of the previous bar has been upcycled and reinstalled as panelling, edging and fitting elements. The original brass light fittings and wonderful historic plaster mouldings were also restored and remain an important part of the new overall concept.

New podiums were installed in the cinema's two smaller auditoriums to allow for optimal visibility. Although the aesthetic interventions here were more fundamental, they still remain true to the charm of the classic cinema experience. The walls of one screening room are clad in sumptuous folds of dark Prussian blue fabric which contrasts with the warm glow of the yellow-upholstered seating rows. The other screening room is an interpretation of the classic cinema interior with a range of reds from rust to crimson covering walls and seating alike with long vertical strips of light at regular intervals along the side walls.

Just as the ground floor of this neoclassical building functions as a connecting passageway between Karl-Marx-Strasse and Richardstrasse in Berlin's Neukölln, from which the cinema gets its name, BATEK ARCHITEKTEN have created a connection between the glamour of one of Berlin's oldest cinemas and the cinema experience of the here and now with their thought-out and sophisticated interventions.

/End.

BATEK ARCHITEKTEN

NOTES TO EDITORS

Facts

TEAM	Anke Müller, Patrick Batek
COMPLETION	November 2021
AREA	325 sqm
SCOPE OF WORK	Work phase 1-9
MATERIALS	Linoleum, corten steel, HPL, plastic mirror, natural stone, fabric, velvet
PHOTOGRAPHER	Marcus Wend

BATEK ARCHITEKTEN

OFFICE PROFILE

BATEK ARCHITEKTEN is an office for interior design and architecture, located in Berlin. The portfolio comprises public and private projects including apartments and private houses, retail shops and surgeries, restaurants, hotels and offices. Frequently, BATEK ARCHITEKTEN works with existing spaces, which they develop further with a sensitive approach to the space and its specific character. The office also stands for a keen sense for materials, colours and light. The projects are characterized by a clean architectural structure and a conducive atmosphere. BATEK ARCHITEKTEN regard themselves as service providers: they realize the specific wishes and requirements of their customers individually and in highest quality and adapt their design to the respective conditions and requirements.

www.batekarchitekten.com

PRESS CONTACT

Brand. Kiosk
Johanna Bieber / Susanne Günther
batek@brand-kiosk.com
+49 (0)69 2649 1122



PASSAGE_MARCUSWEND_DSC03277.JPG



PASSAGE_MARCUSWEND_DSC03286.JPG



PASSAGE_MARCUSWEND_DSC03293.JPG



PASSAGE_MARCUSWEND_DSC03295.JPG



PASSAGE_MARCUSWEND_DSC03304.JPG



PASSAGE_MARCUSWEND_DSC03308.JPG



PASSAGE_MARCUSWEND_DSC03360.JPG

Available photographs, floorplans and other plan materials.
To receive high-resolution images, please contact Brand. Kiosk on: batek@brand-kiosk.com
Please credit Marcus Wend in all publications.



PASSAGE_MARCUSWEND_DSC03380.JPG



PASSAGE_MARCUSWEND_DSC03389.JPG



PASSAGE_MARCUSWEND_DSC03400.JPG



PASSAGE_MARCUSWEND_DSC03401.JPG



PASSAGE_MARCUSWEND_DSC03405.JPG



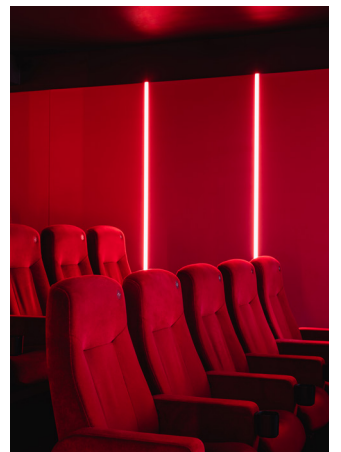
PASSAGE_MARCUSWEND_DSC03440.JPG



PASSAGE_MARCUSWEND_DSC03422.JPG



PASSAGE_MARCUSWEND_DSC03452.JPG



PASSAGE_MARCUSWEND_DSC03495.JPG

Available photographs, floorplans and other plan materials.
To receive high-resolution images, please contact Brand. Kiosk on: batek@brand-kiosk.com
Please credit Marcus Wend in all publications.



PASSAGE_MARCUSWEND_DSC03459.JPG



PASSAGE_MARCUSWEND_DSC03462.JPG



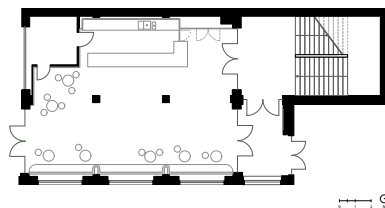
PASSAGE_MARCUSWEND_DSC03491.JPG



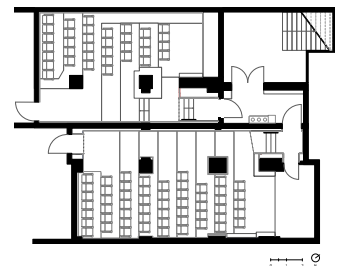
PASSAGE_MARCUSWEND_DSC03548.JPG



PASSAGE_MARCUSWEND_DSC03492.JPG



BATEKARCHITEKTEN_YORCK PASSAGE_FOYER.PDF



BATEKARCHITEKTEN_YORCK PASSAGE_SAA3UND4.PDF

Available photographs, floorplans and other plan materials.
To receive high-resolution images, please contact Brand. Kiosk on: batek@brand-kiosk.com
Please credit Marcus Wend in all publications.